

28 September 2017

## SECOND PHASE OF DRILLING COMMENCES AT BARLEE GOLD PROJECT

### HIGHLIGHTS:

- **7,000m RC drilling programme commenced at Barlee Gold Project, including maiden drilling at the T6, T8 & T11 Prospects (Barlee South).**
- **Additional infill and step out RC drilling to be undertaken at the T2 Prospect where previous drilling has identified a 1.2km x 350m gold anomaly, open to the north and south.**

Segue Resources Limited (**Segue** or the **Company**) is pleased to announce that the second phase of reverse circulation (RC) drilling has commenced at the Barlee Gold Project, near Southern Cross in the Eastern Goldfields, Western Australia (**Figure 1**).

The RC drill programme will include the first significant gold drilling ever undertaken at the T6, T8 and T11 Prospects (Barlee South). A total of 5,500m will be drilled at these three prospects, where significant gold anomalies have been defined by previous BLEG and soil sampling surveys.

Following the successful maiden drilling programme at the T1 and T2 Prospects (*see announcement on 14 September 2017*), an additional 1,500m of infill and step out drilling will be undertaken at the T2 Prospect.

The first pass drilling at T2 was undertaken in two parts. The first part was a 400m x 80m shallow aircore programme. Based on the observations of that drilling and previous work completed in the area, two fence lines of 60m spaced 120m deep RC holes were completed over a mineralised structure.

The results of the 400m x 80m spaced aircore programme has delineated a **1.2km x 350m mineralised corridor** which remains open along strike to the north and south (**Figure 2**). Eighteen (18) drill holes returned values over 50ppb Au.

The deeper RC fence lines resulted in confirming fresh rock mineralisation with the best intercept of **48m @ 0.67g/t Au from 27m including 21m @ 1.13 g/t Au from 54m and 3m @ 2.28 g/t Au from 63m**.

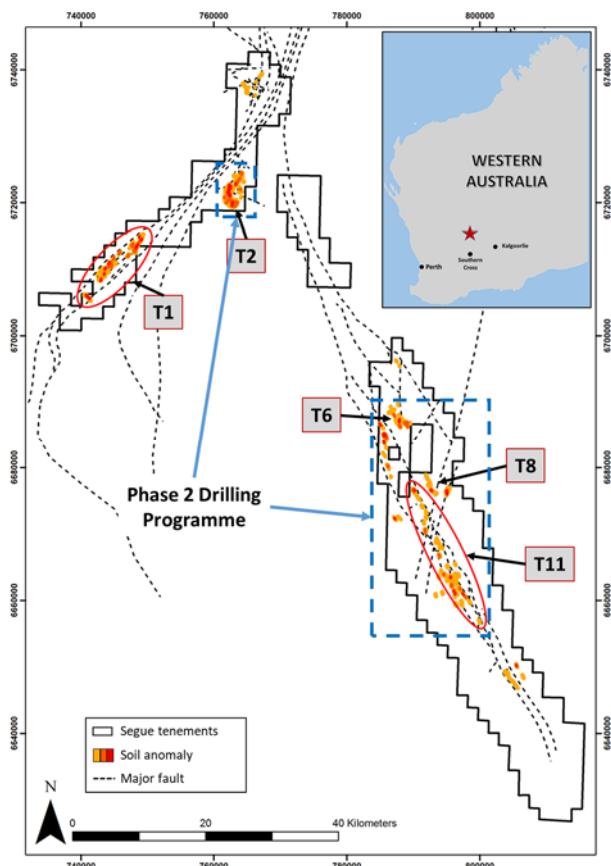
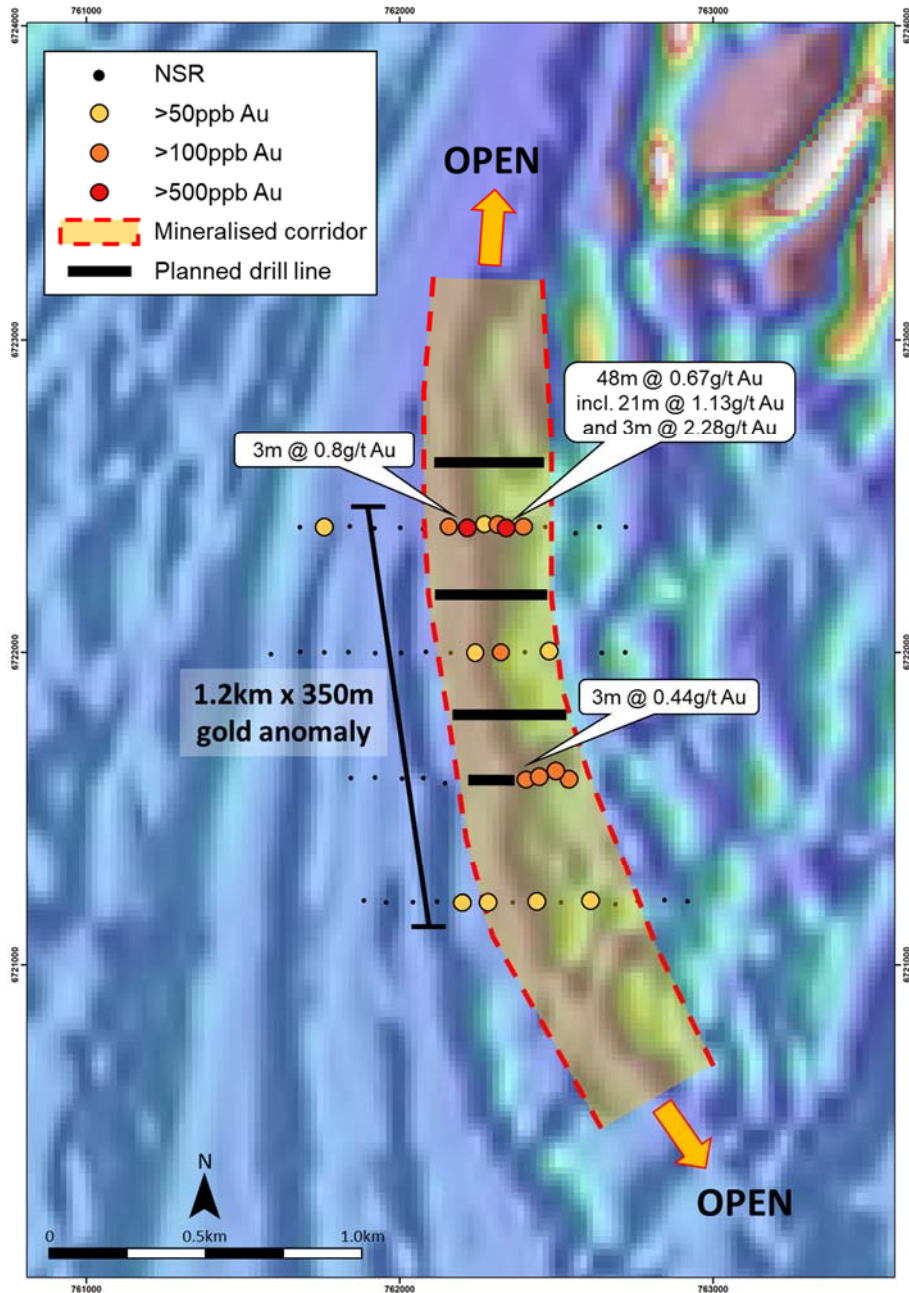


Figure 1: Project location map



**Figure 2: T2 Prospect showing 1.2km x 350m gold anomaly (+50ppb Au)**

The T6, T8 and T11 prospects at Barlee South are all located within the Yerilgee Greenstone belt. The tenements, which were applied for in October 2016, have recently been granted and all approvals are in place to undertake the first significant gold drilling at any of these prospects. A total of 5,500m of RC drilling will be completed at the three prospects (**Figure 3**), targeting gold anomalies defined from previous soil sampling combined with structural and geological interpretation.

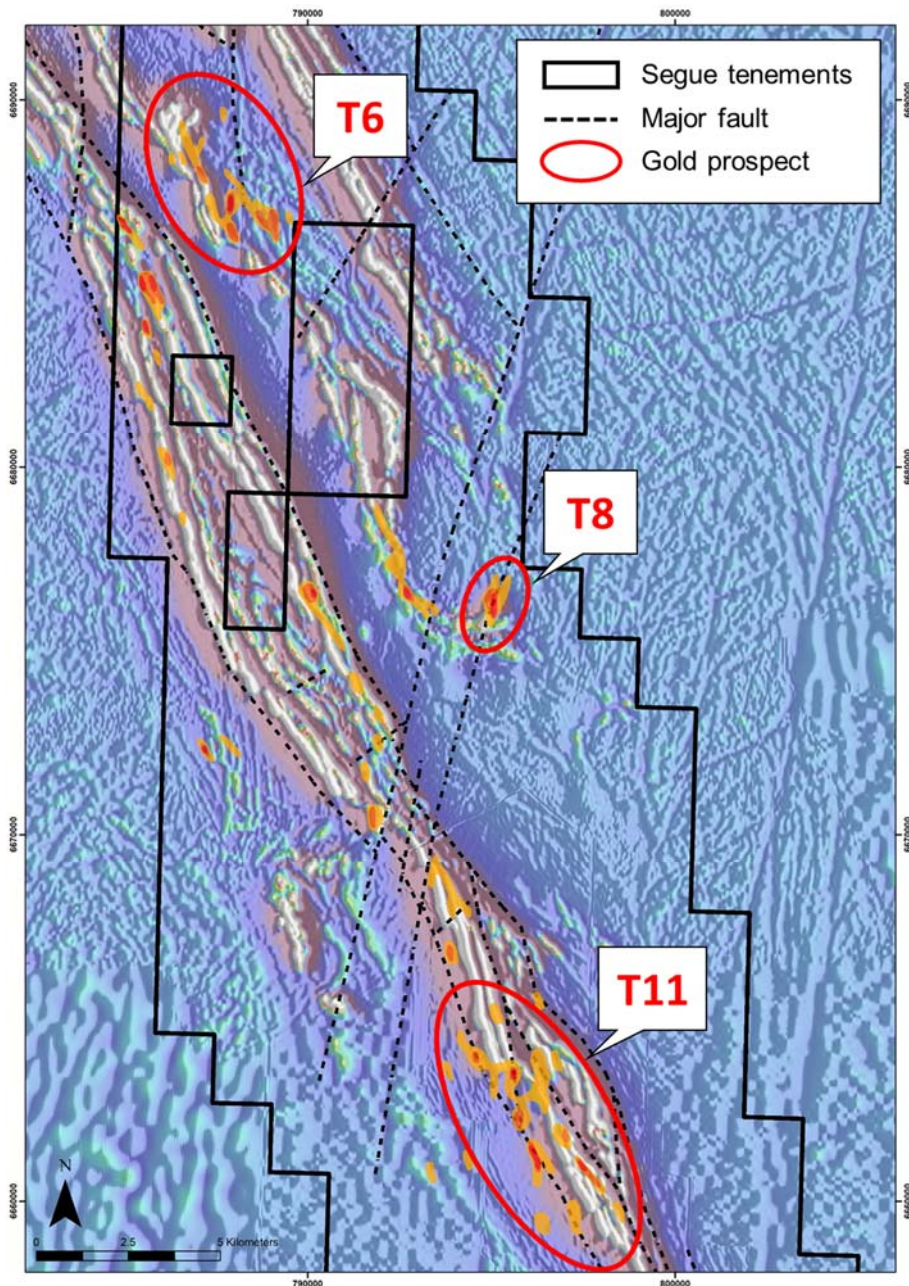
Drilling at T6 will consist of shallow RC holes testing three features:

- a folded and faulted BIF contact with associated As and Sb anomalism;
- a major fault through mafic and ultramafic rocks which have been intruded by felsic porphyrys with an associated Bi-Te-W anomalism; and

- an interpreted anticline fold hinge in ultramafic rocks sitting above a gravity low interpreted to be a felsic intrusion with associated Bi-Mo-Te-W anomalism.

Drilling at T8 will consist of two RC fence lines of 120m deep holes which will test a regionally significant north-east trending structure with a 1.4km x 350m wide gold anomaly. Drilling will test and intercept the interpreted mineralised structure responsible for the anomalism.

It is anticipated that the drilling programme will be completed by the end of October, with assay results received by the end of November 2017.



**Figure 3: Barlee South showing T6, T8 and T11 Prospects**

For further information visit [www.segueresources.com](http://www.segueresources.com) or contact:

**Segue Resources Limited**

Mr Steven Michael

*Managing Director*

E: [info@segueresources.com](mailto:info@segueresources.com)

**Competent Persons Statement**

The information in this report that relates to Exploration Results is based on information compiled by Mr Dean Tuck who is a Member of the Australian Institute of Geoscientists. Mr Tuck has more than five years' experience which is relevant to the style of mineralisation and type of deposit under consideration and to the activity which he is undertaking to qualify as a Competent Person as defined in the 2012 Edition of the "Australasian Code for Reporting of Exploration Results, Minerals Resources and Ore Reserves". Mr Tuck consents to the inclusion in the report of the matters based on his information in the form and context in which it appears.